

# Slimlift

## Two in One Laser Lipolysis System

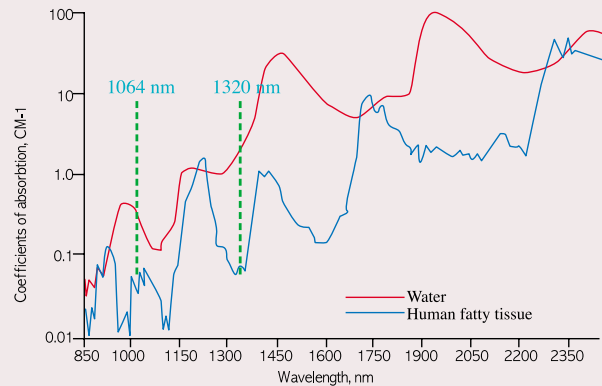
Slimlift™ is a Two in One laser lipolysis system that not only has 1064nm (max. 10W) wavelength, the basic wavelength of Nd:YAG laser, but also has a special 1320nm wavelength. Slimlift™ is a state-of-the-art medical equipment that can be used in wider range of body sculpting treatment.



## Two in One Laser Lipolysis System

### ► Nd:YAG laser : water absorption and fat tissue penetration

The absorption rate for fat tissue is higher than that of water at 920nm, 1200nm & 1750nm. But among the commercialized lasers, 1064nm is very closer to above three wavelength's absorption rate and also has the best effect on the laser lipolysis.



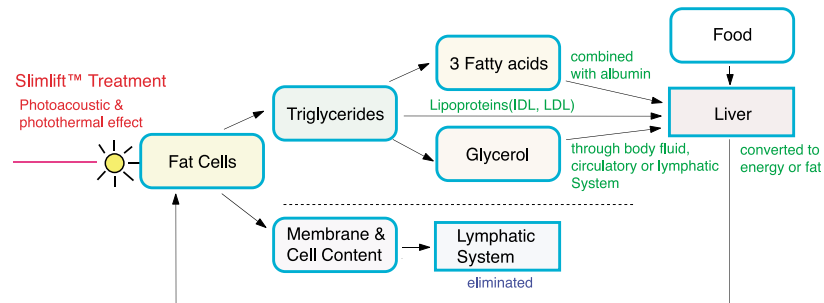
### ► Principle of Slimlift treatment

#### ● Photoacoustic effect

With physical effect of laser, break the fat cell's membrane.

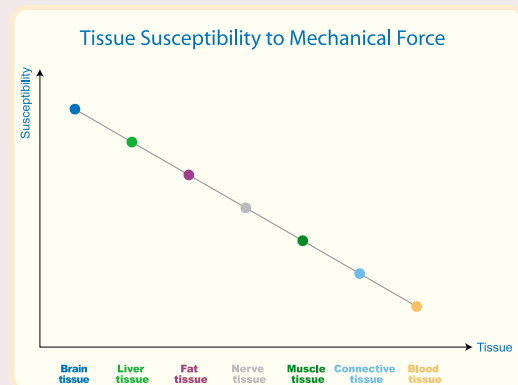
#### ● Photothermal effect

The light energy of laser is changed into thermal energy and then destroy fat cell.



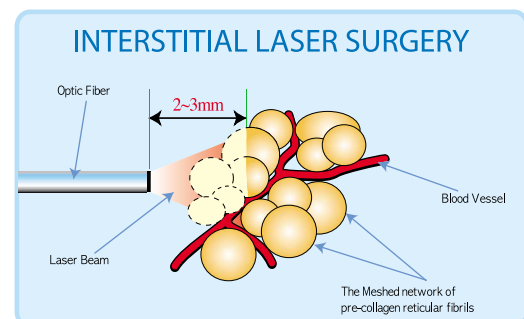
### ► Tissue Susceptibility to Mechanical Force

- Nerve and Muscle tissue are safer than the fat tissue for the physical energy of laser.

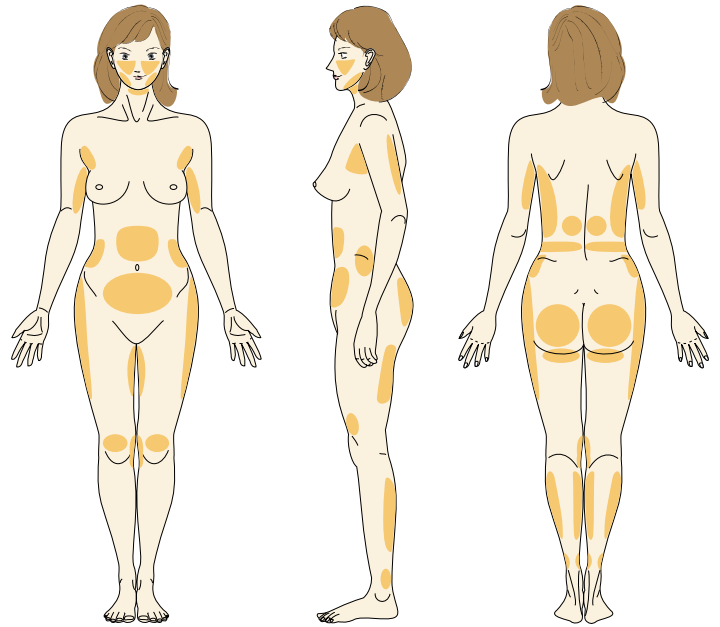
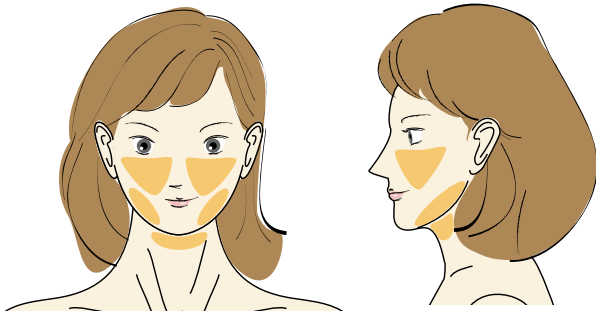


### ► Nd:YAG Laser Lipolysis(Slimlift™)

- As the laser energy is reached within 2~3mm from the end of optic fiber with the pulse width, 150 $\mu$ m, there is no thermal damage to the any other tissues.



## Treatment Areas



## Advantage of Slimlift™

### ► Application

- 1) Any part of the body where the traditional liposuction could not be applied Face(Cheek, chin, forefront of cheek bone), double chin, heap(saddle line), calves, rear part of armhole, forearm & others.
  - Reopearion on the irregularity part after liposuction
- 2) Lifting and tightening by stimulating dermis on saggy skin after liposuction
  - Facial skin lifting(ex: Nasolabial fold & others)
- 3) Osmidrosis axillae & hyperhidrosis
- 4) Improving Striae Distensae & Skin rejuvenation using 1320nm

### ► Main Features

- 1) Less blood loss, pain and scar than Liposuction
- 2) No severe side effects
- 3) Fast Recovery
- 4) Flatness on the treatment area
- 5) Possible for the repeated operation after 2 or 3 months
- 6) Short treatment time (Lunch time treatment possible)
- 7) Easy to learn the Slimlift™ technique
- 8) Less post-treatment care
- 9) Combination of 1064nm & 1320nm makes best effect on skin lifting.

## Slimlift™ treatment



Clinical Images



Before



After



Before



After



Before



After



Before



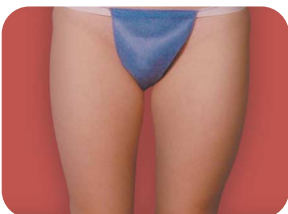
After



Before



After



Before



After



Before



After



Before



After



Before



After



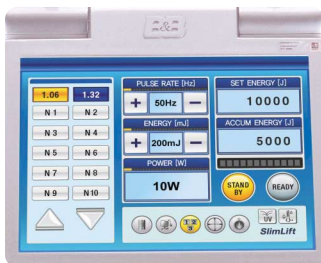
## Two in One Laser Lipolysis System

### Truly Versatile Dual wavelength in a Single system

- 1064nm Nd:YAG Laser
- 1320nm Nd:YAG Laser

### Truly Dignified Appearance

### Truly Intuitive



### Truly Hygienic

- Anti-bacterial silver-nano coating



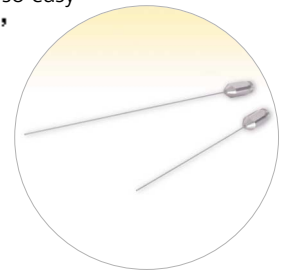
### Truly Advanced

- Slim & Lift at the same time with dual wavelengths laser beam(1064 & 1320nm)



### Truly User Friendly

- Laser lipolysis has never been so easy with 'timer' feature



### Product Features

1. Various treatments can be possible for getting the best result.
2. Minimally invasive procedures for safety.
3. The optic fiber, as long as 3 meters, makes operation more comfortable.
4. The total accumulative energy display allows continual use of laser beam as long as desired, provides easier operation.
5. Pulse width as narrow as 0.15ms(150  $\mu$ s).
6. Using an easily noticeable, red targeting beam offers easier locating of the tip of optic fiber.



In May 1994, a medical equipment research team was organized under the auspices of the Samsung Advanced Institute of Technology to supervise the medical equipment business of the Samsung Group.

When the dental laser system as one of the group's research projects was successfully commercialized, an independent medical equipment project team (first in-house venture) was established.

Seeking to participate in the medical equipment business aggressively, the team was spun off from Samsung Electronics in May 2002; thus, B&B Systems was born.

### The historic line-up of B&B's laser lipolysis system



### Specification

■ Slimlift (Domestic model: S-lift)

Laser type	Pulsed Nd:YAG Laser
Wavelength	1064nm, 1320nm
Power	1064nm; 10W(max), 1320nm; 8W(max)
Pulse Rate	1064nm; 5~50Hz, 1320nm; 5~50Hz
Fiber	300um Optic Fiber
Aiming Beam	Red Visible Diode Laser
Power Requirements	220~230VAC 50/60Hz 100~110VAC 50/60Hz(optional)
Size	270mm(W) x 550mm(D) x 830mm(H)
Weight	49kg



ISO 13485  INNOBIZ

A Leader in Laser Equipment

**B&B Systems**

Rm. 516~518, Byucksan/Kyungin Digital Valley II, 481-10, Gasan-Dong, Geumcheon-Gu, Seoul, 153-803, Republic of Korea

**Oversea Sales Dept.**

■ Phone: +82-2-2113-1382 ■ Fax: +82-2-2113-1388

■ E-mail: [bnb@bnbsys.co.kr](mailto:bnb@bnbsys.co.kr)

Website: [www.bnbsys.co.kr](http://www.bnbsys.co.kr)